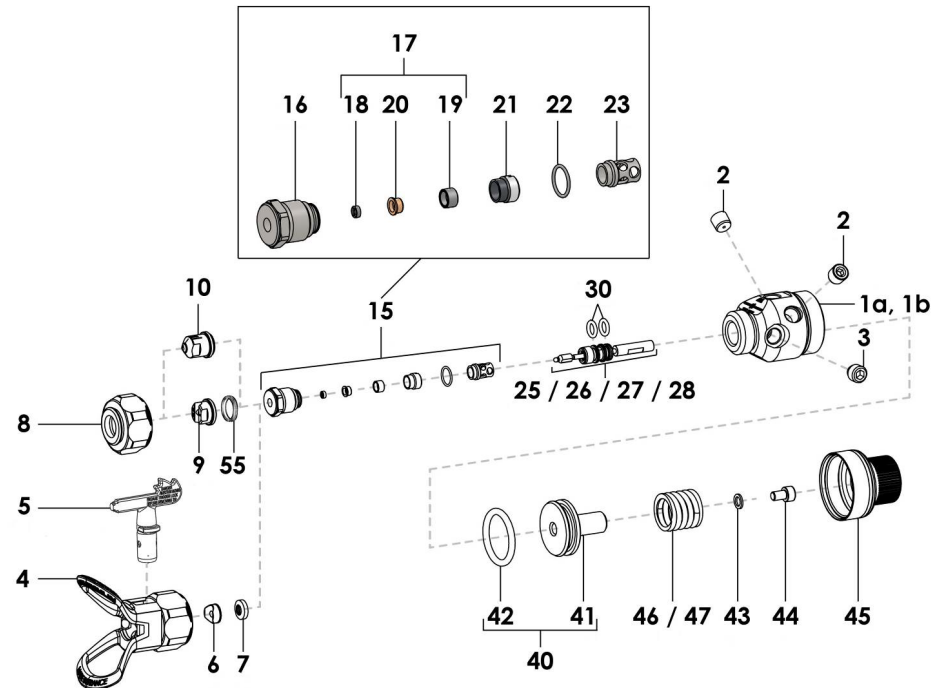
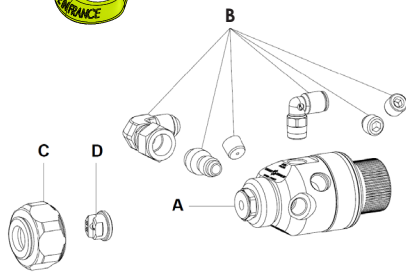


ASC AUTOMATIC GUN PARTS BREAKDOWN



ASC
A / Gun
B / Fittings
C / Tightening Nut
D / Base Airless Tip



A / GUN - STAINLESS STEEL	
Airless automatic spray gun, model ASC 240 with tightening nut for flat and Skill™ tip, without tip, with PTFE cartridge	129.982.121
Airless automatic spray gun, model ASC 240 with tightening nut for reversing tip, without tip, with PTFE cartridge	129.982.122
Airless automatic spray gun, model ASC 240 with tightening nut for flat and Skill™ tip, without tip, with GT cartridge	129.982.521
Airless automatic spray gun, model ASC 240 with tightening nut for reversing tip, without tip, with GT cartridge	129.982.522
Airless automatic spray gun, model ASC 400 with tightening nut for flat and Skill™ tip, without tip, with PTFE cartridge	129.984.121
Airless automatic spray gun, model ASC 400 with tightening nut for reversing tip, without tip, with PTFE cartridge	129.984.122
Airless automatic spray gun, model ASC 400 with tightening nut for flat and Skill™ tip, without tip, with GT cartridge	129.984.521
Airless automatic spray gun, model ASC 400 with tightening nut for reversing tip, without tip, with GT cartridge	129.984.522

FLAT TIP CHART - For P/N 000.00X.XXX, replace Xs with numbers engraved on tip													
Calibre Size Größe	Ø, mm	Débit d'eau Water output Wasserdurchsatz Caudal agua (l / mn)	Diaphragme buse / Tip diaphragm / Vorzerstäuber / Restrictor boquilla	Largeur de jet à 25 cm / Spray fan width at 25 cm (10") Strahlbreite bei 25 cm Abstand / Ancho abanico à 25 cm									
				9	12	17	21	25	29	33	37	44	56
				Nombre gravé sur la buse / Number engraved on the tip Eingravierte Kennzahl auf der Düse / indice gravado sobre la boquilla									
03	0,18	0,23	12	03.03	03.05	03.07							
04	0,23	0,31	12	04.03	04.05	04.07	04.09	04.11	04.13				
06	0,28	0,46	12	06.03	06.05	06.07	06.09	06.11	06.13	06.15			
09	0,33	0,63	15	09.03	09.05	09.07	09.09	09.11	09.13	09.15	09.17		
12	0,38	0,86	15			12.07	12.09	12.11	12.13	12.15	12.17		
14	0,41	1,01	18	14.03	14.05	14.07	14.09	14.11	14.13	14.15	14.17	14.19	
18	0,46	1,34	18				18.09	18.11	18.13	18.15	18.17	18.19	
20	0,51	1,50	20		20.05	20.07	20.09	20.11	20.13	20.15	20.17	20.19	
25	0,56	1,88	20					25.11	25.13	25.15	25.17	25.19	
30	0,61	2,25	25				30.07	30.09	30.11	30.13	30.15	30.17	30.19
40	0,66	3,25	25					40.11	40.13	40.15	40.17	40.19	
45	0,74	3,34	60			45.07		45.11	45.13	45.15	45.17	45.19	45.21
68	0,91	5,60	60					68.11	68.13	68.15	68.17	68.19	

SKILL™ TIP CHART - For P/N 000.30X.XXX, replace Xs with numbers engraved on tip												
Calibre Size Größe	Ø, mm	Débit d'eau Water output Wasserdurchsatz Caudal agua (l / mn)	Diaphragme buse / Tip diaphragm / Vorzerstäuber / Restrictor boquilla	Largeur de jet à 25 cm / Spray fan width at 25 cm (10") Strahlbreite bei 25 cm Abstand / Ancho abanico à 25 cm								
				9	12	17	21	25	29	33	37	
				Nombre gravé sur la buse / Number engraved on the tip Eingravierte Kennzahl auf der Düse / indice gravado sobre la boquilla								
03	0,18	0,25			03.07	03.09	03.11	03.13				
04	0,23	0,33			04.07	04.09	04.11	04.13				
06	0,28	0,49			06.07	06.09	06.11	06.13	06.15			
07	0,30	0,60	07.05		07.07	07.09	07.11	07.13	07.15			
09	0,33	0,69			09.07	09.09	09.11	09.13	09.15	09.17		
12	0,38	0,91						12.13	12.15	12.17		
14	0,41	1,17						14.13	14.15	14.17	14.19	
18	0,46	1,47						18.13	18.15	18.17	18.19	

REVERSIBLE TIP CHART - For P/N 000.40X.XXX, replace Xs with numbers engraved on tip												
Fan width / Strahlbreite / Anchura abanico	→	12 / 16 cm	17 / 21 cm	22 / 24.5 cm	25 / 29 cm	29 / 33 cm	33 / 37 cm	38 / 44 cm				
Angle / Winkel / Abanico	→	20°	30°	40°	50°	60°	70°	80°				
Débit eau Water flow rate Wasser- durchsatz Caudal agua (l/mn) 70 bar / 1.015 psi	Ø (pouce/")	Calibre Size Größe							Débit eau Water flow rate Wasser- durchsatz Caudal agua (l/mn) 138 bar / 2.2002 psi			
			2XX XX-07	3XX XX-09	4XX XX-11	5XX XX-13	6XX XX-15	7XX XX-17		8XX XX-19		
0.22 l/mn	0.009 04	04-07	309 04-09	409 04-11	509 04-13				0.33 l/mn			
0.33 l/mn	0.011 06	06-07	311 06-09	411 06-11	511 06-13	611 06-15			0.49 l/mn			
0.45 l/mn	0.013 09	09-07	313 09-09	413 09-11	513 09-13	613 09-15	713 09-17		0.69 l/mn			
0.60 l/mn	0.015 12	12-07	315 12-09	415 12-11	515 12-13	615 12-15	715 12-17		0.91 l/mn			
0.72 l/mn	0.017 14	14-07	317 14-09	417 14-11	517 14-13	617 14-15	717 14-17	817 14-19	1.17 l/mn			
0.95 l/mn	0.019 18	18-07	319 18-09	419 18-11	519 18-13	619 18-15	719 18-17	819 18-19	1.47 l/mn			
1.33 l/mn	0.021 25			421 25-11	521 25-13	621 25-15	721 25-17	821 25-19	1.79 l/mn			
1.6 l/mn	0.023 30			423 30-11	523 30-13	623 30-15	723 30-17	823 30-19	2.15 l/mn			
2.175 l/mn	0.025 40			425 40-11	525 40-13	625 40-15	725 40-17	825 40-19	2.54 l/mn			
2.38 l/m	0.029 45		329 45-09	429 45-11	529 45-13	629 45-15	729 45-17	829 45-19	3.42 l/mn			
3.78 l/mn	0.033 68			433 68-11	533 68-13	633 68-15	733 68-17	833 68-19	4.42 l/mn			
5.11 l/mn	0.036 100				539 100-13	639 100-15	739 100-17	839 100-19	5.42 l/mn			

COMMON PARTS			
No.	Part Number	Description	S/P Level
2	129.990.029	Plug, model G 1/8 (x2)	2
3	129.982.001	Male plug	1
*15	129.740.040	Seat holder assembly	1
16	NC / NS	Seat holder	1
*17	129.740.908	▫ Seat with PEEK seal (x2)	1
18	NC / NS	▫ ▫ Helicoils (x2)	1
19	129.670.049	▫ ▫ Seat carbide (x2)	1
20	NC / NS	▫ ▫ PEEK seal (x2)	1
21	029.600.106	▫ Screw for seat	1
*22	150.040.341	▫ O-ring (x10)	1
*23	129.740.045	▫ Cartridge stop (x5)	1
*40	129.982.045	Piston assembly	1
41	NC / NS	▫ Piston	1
42	909.130.522	▫ Piston seal	1
*43	NC / NS	Seal	1
44	88.127	Screw, model CHc M 5x8	1
45	129.982.041	Cylinder	1

SPECIFIC PARTS			
No.	Part Number	Description	S/P Level
1a	NC / NS	Gun body 240 bar	1
1b	NC / NS	Gun body 400 bar	1
4		Tightening nut for reversing TIP TOP	1
5+6+7		Reversing Airless TIP TOP + seat + seal tip	1
8		Tightening nut for flat & Skill™ tip	1
9		Airless tip	1
10		Skill™ tip	1

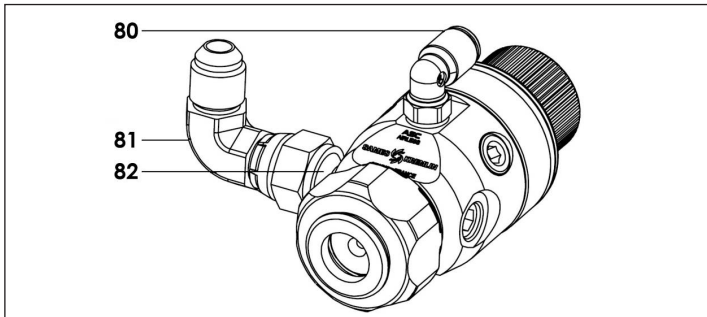
Ind. 46		Ind. 47	
No.	Part Number	Description	S/P Level
46	150.314.106	Piston spring ASC 240 bar	1
47	150.314.107	Piston spring ASC 400 bar	1

Ind. 25 & Ind. 26			
No.	Part Number	Description	S/P Level

No.	Part Number	Description	S/P Level
*25	129.990.040	GT cartridge-carbide needle assembly	1
*26	129.990.050	PTFE cartridge-carbide needle assembly	1
*27	129.990.080	GT cartridge-PEEK needle assembly	1
*28	129.990.070	PTFE cartridge-PEEK needle assembly	1
*30	129.990.063	▫ Seal FFKM (x10)	1
*52	129.990.034	▫ Tool	1

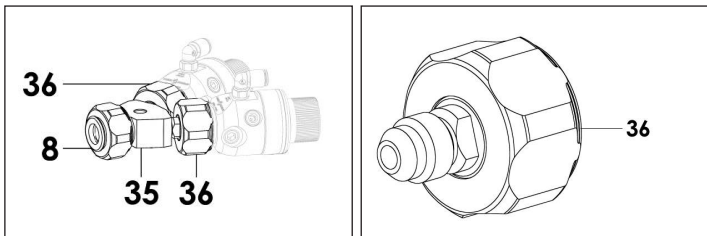
KITS			
No.	Part Number	Description	S/P Level
*	129.982.093	Package of seals (ind., 22, 30 (x2), 42, 43)	1

B / FITTINGS



No.	Part Number	Description	S/P Level
80	905.120.902	Elbow fitting (control) 1/8 G - 4x6	1
81	905.160.101	Elbow fitting (product) M 1/2 JIC - F 1/2 JIC	1
82	129.982.003	Fitting (product) MG 1/8 - M 1/2 - JIC	1

ACCESSORIES



TOOLS

No.	Part Number	Description	S/P Level
50	921.080.301	Allen key size 4mm	1
51	906.300.101	Large size brush	1



ACCESSORIES

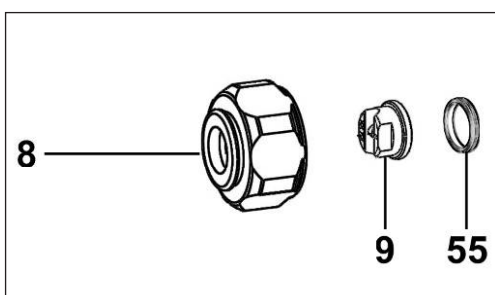
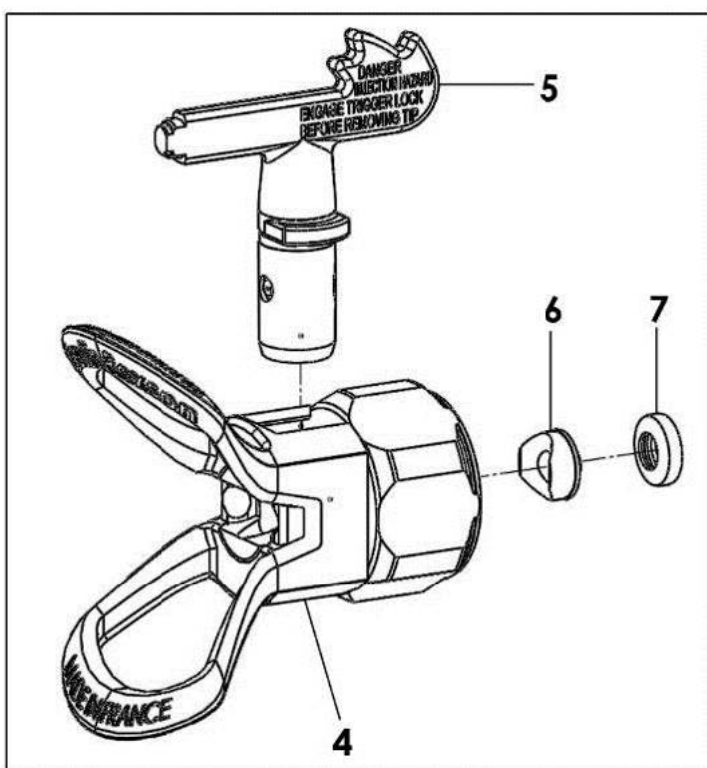
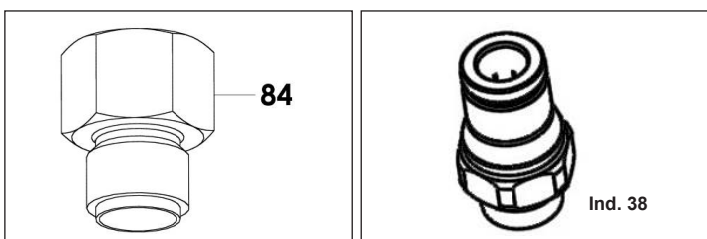
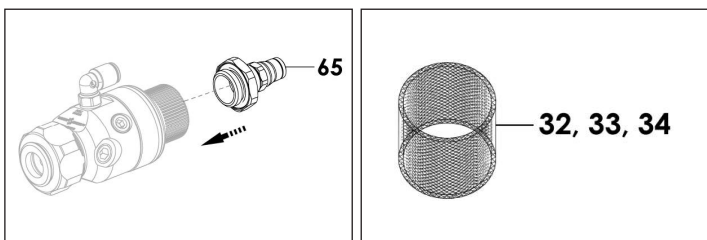
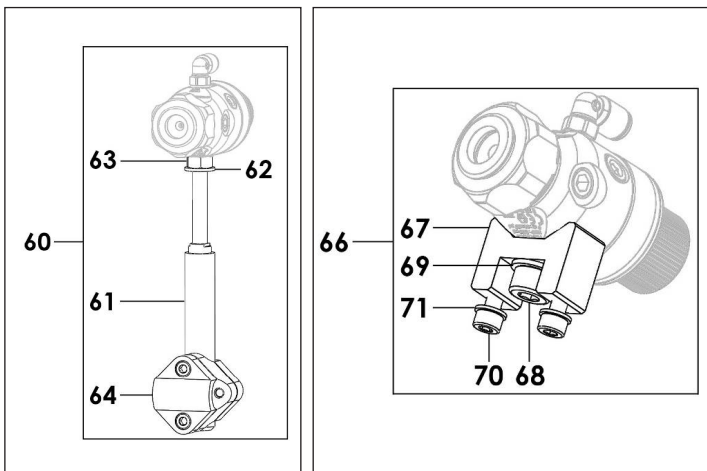
No.	Part Number	Description	S/P Level
32	129.982.021	N°4 Screen (x5)	1
33	129.982.022	N°6 Screen (x5)	1
34	129.982.023	N°12 Screen (x5)	1
35	129.982.060	Manifold for 2 guns	1
36	129.982.065	Manifold 1/2 JIC	1
60	049.351.000	Holding rod	1
61	049.351.001	▫ Rod	1
62	963.020.019	▫ Washer, model ZU 8	1
63	953.010.019	▫ Nut, model HM8	1
64	906.480.002	▫ Nuts	1
65	129.982.050	Closing support 4x6	1
66	129.982.030	Mounting support	1
67	029.982.031	▫ Support	1
68	930.151.198	▫ Screw, model CHc M 8x16	1
69	963.020.019	▫ Washer, model ZU 8	1
70	931.151.168	▫ Screw, model CHc M 5x12	2
71	963.040.014	▫ Washer, model Z M 5x10	2
84	050.123.304	Fitting M 1/4 NPS - F 1/2 JIC	1

OPTIONS

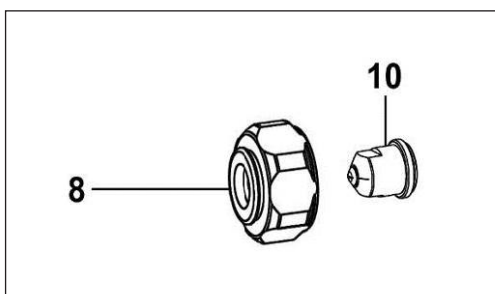
No.	Part Number	Description	S/P Level
*38	129.990.062	Fitting (x2)	1

TIP ACCESSORIES

No.	Part Number	Description	S/P Level
4	132.740.200	Airless manifold for reversing Tip Top (refer to Doc. 573.148.080)	1
5-7	000.40X.XXX	Reversing Airless Tip Top + seat + seal tip	1
*7	134.740.007	Reversing seal tip (x10)	1
*	129.740.907	Servicing kit - seat + seal tip (ind. 6 (x4), 7 (x4))	



FLAT TIPS (see page 1 for chart)			
No.	Part Number	Description	S/P Level
8	129.740.071	Tightening nut for flat and Skill™ tip	1
9	000.00X.XXX	Flat airless tip	1
55	150.041.319	Seal for flat tip (x5)	1



SKILL™ TIPS (see page 1 for chart)			
No.	Part Number	Description	S/P Level
8	129.740.071	Tightening nut for flat and Skill™ tip	1
10	000.30X.XXX	Skill™ tip	1
-	134.980.002	Package of bearing (x10)	1

SAMES KREMLIN Inc.

North America Headquarters 45001 5 Mile Road, Plymouth, MI 48170 | Toll: (800)573-5554 | Tel: (734)979-0100 | Fax: (734)927-0064

Canada Branch 931 Progress Avenue, Unit 7, Scarborough, ON M1G 3V5 | Toll: (800)450-0655 | Tel: (416)431-5017 | Fax: (416)431-9171

Mexico Branch Acceso III N°16A Int 15A, Parque Industrial Benito Juárez, Querétaro, CP 76120 | Tel: +52 (442)161-2595 ext 170