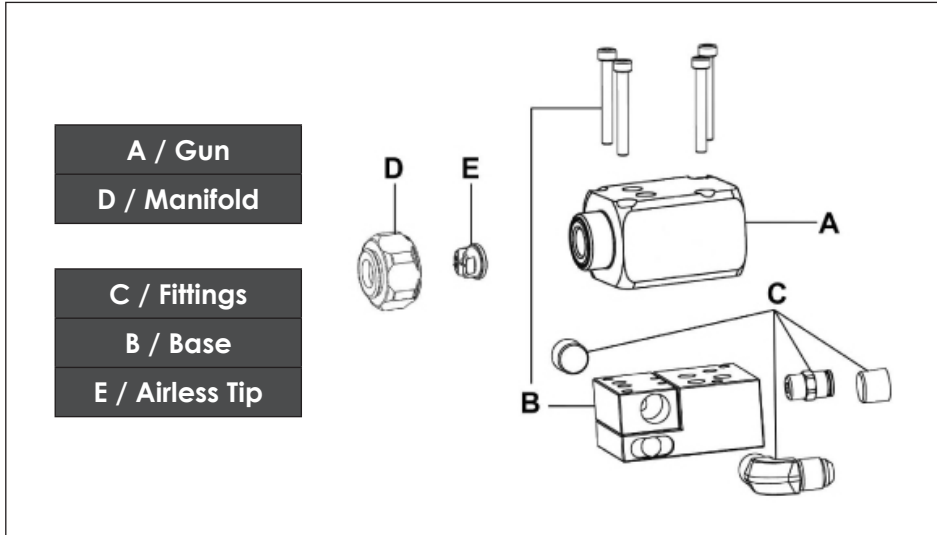


# ASB AUTOMATIC GUN PARTS BREAKDOWN



A / GUN - STAINLESS STEEL	
Airless automatic spray gun, model ASB 240 with flat manifold, without tip, with PTFE cartridge	129.990.200
ASB 240 Airless tip	
Airless automatic spray gun, model ASB 240 with flat manifold, without tip, with GT cartridge	129.990.300
ASB 240 Airless tip	
Airless automatic spray gun, model ASB 240 with manifold for reversing tip, without tip, with PTFE cartridge	129.990.400
ASB 240 Airless tip	
Airless automatic spray gun, model ASB 240 with manifold for reversing tip, without tip, with GT cartridge	129.990.500
ASB 240 Airless tip	

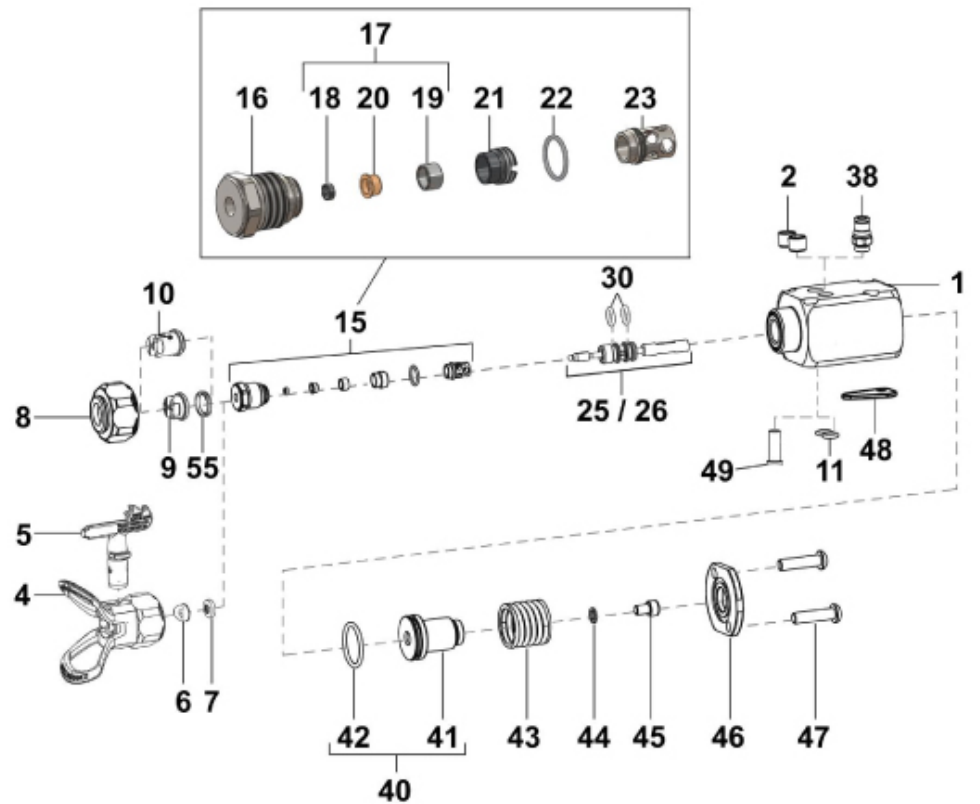
GT CARTRIDGE NEEDLE			
No.	Part Number	Description	S/P Level
*25	129.990.040	GT cartridge needle assembly	1
*30	129.990.063	Seal PTFE (x10)	1
*52	129.990.034	Tool	1

PTFE CARTRIDGE NEEDLE			
No.	Part Number	Description	S/P Level
*26	129.990.050	PTFE cartridge needle assembly	1
*30	129.990.063	Seal PTFE (x10)	1
*52	129.990.034	Tool	1

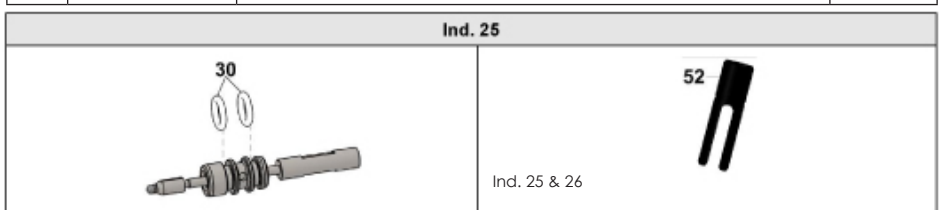
KITS			
No.	Part Number	Description	S/P Level
*	129.990.060	Package of seals (ind. 11 (x2), 22, 42, 44, 48)	1
*	129.990.061	Servicing kit - screws (ind. 45, 47 (x2))	1
*	129.990.066	Servicing kit - screws for base (ind. 63 (x4))	1

FLAT TIP CHART															
Calibre / Size / Größe	Ø, mm	Pression / Pressure / Druck / Presión / Caudal agua / Caudal agua (l / mn)	Diaphragme buse / Tip diaphragm / Vorzerstäuber / Restrictor boquilla	Largeur de jet à 25 cm / Spray fan width at 25 cm (10") / Strahlbreite bei 25 cm Abstand / Ancho abanico à 25 cm											
				9	12	17	21	25	29	33	37	44	56		
03	0,18	0,23	12	03.03	03.05	03.07									
04	0,23	0,31	12	04.03	04.05	04.07	04.09	04.11	04.13						
06	0,28	0,46	12	06.03	06.05	06.07	06.09	06.11	06.13	06.15					
09	0,33	0,63	15	09.03	09.05	09.07	09.09	09.11	09.13	09.15	09.17				
12	0,38	0,86	15			12.07	12.09	12.11	12.13	12.15	12.17				
14	0,41	1,01	18	14.03	14.05	14.07	14.09	14.11	14.13	14.15	14.17	14.19			
18	0,46	1,34	18				18.09	18.11	18.13	18.15	18.17	18.19			
20	0,51	1,50	20		20.05	20.07	20.09	20.11	20.13	20.15	20.17	20.19			
25	0,56	1,88	20				25.11	25.13	25.15	25.17	25.19				
30	0,61	2,25	25			30.07	30.09	30.11	30.13	30.15	30.17	30.19			
40	0,66	3,25	25				40.11	40.13	40.15	40.17	40.19				
45	0,74	3,34	60			45.07		45.11	45.13	45.15	45.17	45.19	45.21		
68	0,91	5,60	60				68.11	68.13	68.15	68.17	68.19				

SKILL™ TIP CHART												
Calibre / Size / Größe	Ø, mm	Pression / Pressure / Druck / Presión / Caudal agua / Caudal agua (l / mn)	Diaphragme buse / Tip diaphragm / Vorzerstäuber / Restrictor boquilla	Largeur de jet à 25 cm / Spray fan width at 25 cm (10") / Strahlbreite bei 25 cm Abstand / Ancho abanico à 25 cm								
				9	12	17	21	25	29	33	37	
03	0,18	0,25		03.07	03.09	03.11	03.13					
04	0,23	0,33		04.07	04.09	04.11	04.13					
06	0,28	0,49		06.07	06.09	06.11	06.13	06.15				
07	0,30	0,60	07.05	07.07	07.09	07.11	07.13	07.15				
09	0,33	0,69		09.07	09.09	09.11	09.13	09.15	09.17			
12	0,38	0,91					12.13	12.15	12.17			
14	0,41	1,17					14.13	14.15	14.17	14.19		
18	0,46	1,47					18.13	18.15	18.17	18.19		



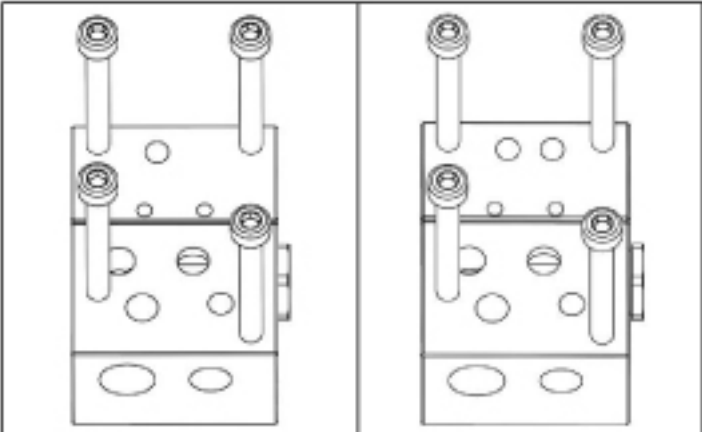
COMMON PARTS			
No.	Part Number	Description	S/P Level
1	029.990.021	Gun body	1
2	129.990.029	Plug, model G 1/8 (x2)	2
*11	150.040.328	Seal (x10)	1
*15	129.740.040	Seat holder assembly	1
16	NC / NS	Seat holder	1
*17	129.740.908	Seat with PEEK seal (x2)	1
18	NC / NS	Helicoils (x2)	1
19	NC / NS	Seat carbide (x2)	1
20	NC / NS	PEEK seal (x2)	1
21	029.600.106	Screw for seat	1
*22	150.040.341	O-ring (x10)	1
*23	129.740.045	Cartridge stop (x5)	1
*40	129.990.035	Piston assembly	1
41	NC / NS	Piston	1
42	129.990.065	Piston seal (x10)	1
43	150.316.501	Piston spring	1
*44	NC / NS	Seal	1
45	88 127	Screw, model CHc M 5x8	1
46	029.990.027	Cover	1
47	934.081.332	Screw, model CHc M 6x25	2
*48	NC / NS	Seal	1
*49	129.990.031	Plug (x4)	1
55	150.041.319	Seal for flat tip (x5)	1



REVERSIBLE TIP CHART										
Largeur de jet / Fan width / Strahlbreite / Ancho abanico	Angle / Winkel / Abanico	Débit eau / Water flow rate / Wasserdurchsatz / Caudal agua / Caudal agua (l / mn) / 70 bar / 1.015 psi	Largeur de jet à 25 cm / Spray fan width at 25 cm (10") / Strahlbreite bei 25 cm Abstand / Ancho abanico à 25 cm							
			12 / 16 cm	17 / 21 cm	22 / 24.5 cm	25 / 29 cm	29 / 33 cm	33 / 37 cm	38 / 44 cm	
0.22 l/mn	20°	0.00904	209	309	409	509				0.33 l/mn
0.33 l/mn	30°	0.01106	211	311	411	511	611			0.49 l/mn
0.45 l/mn	40°	0.01309	213	313	413	513	613	713		0.69 l/mn
0.60 l/mn	50°	0.01512	215	315	415	515	615	715		0.91 l/mn
0.72 l/mn	60°	0.01714	217	317	417	517	617	717	817	1.17 l/mn
0.95 l/mn	70°	0.01918	219	319	419	519	619	719	819	1.47 l/mn
1.33 l/mn	80°	0.02125	221	321	421	521	621	721	821	1.79 l/mn
1.6 l/mn		0.02330	223	323	423	523	623	723	823	2.15 l/mn
2.175 l/mn		0.02540	225	325	425	525	625	725	825	2.54 l/mn
2.38 l/m		0.02945	229	329	429	529	629	729	829	3.42 l/mn
3.78 l/mn		0.03368	233	333	433	533	633	733	833	4.42 l/mn
5.11 l/mn		0.036100	236	336	436	536	636	736	836	5.42 l/mn

## B / BASES (Stainless Steel Insert)

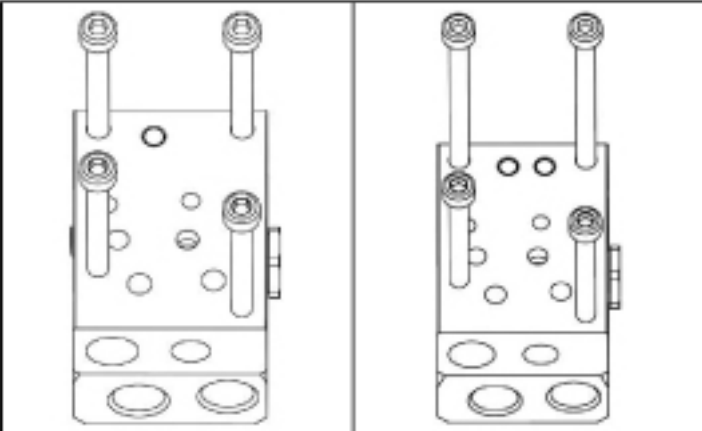
### LATERAL FLUID CONNECTIONS



(L)  
# 129.690.070

(Ω)  
# 129.691.070

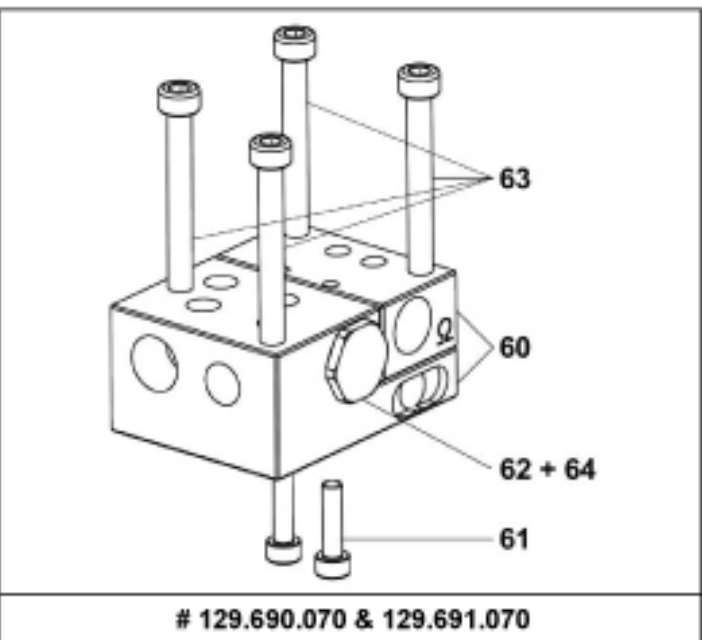
### BACK FLUID CONNECTIONS



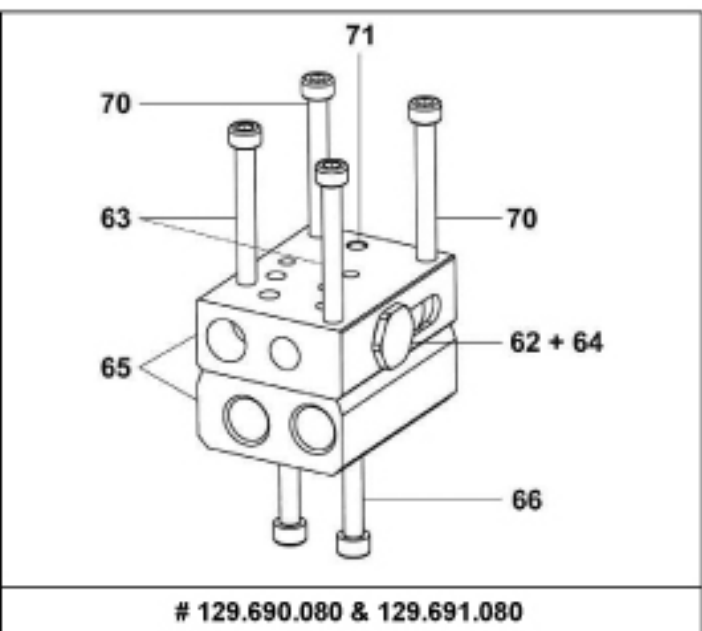
(L)  
# 129.690.080

(Ω)  
# 129.691.080

(L) CIRCULATION IN THE BASE | (Ω) CIRCULATION IN THE GUN



# 129.690.070 & 129.691.070



# 129.690.080 & 129.691.080

## FOR BASE: 129.690.070 & 129.691.070

No.	Part Number	Description	S/P Level
60	NC / NS	Base + insert	1
61	933.151.219	Screw, model CHc M 4x16	2
62	050.261.103	Plug	1
63	88.126	Screw, model CHc M 5x40	4
64	129.529.907	Seal (x10)	1

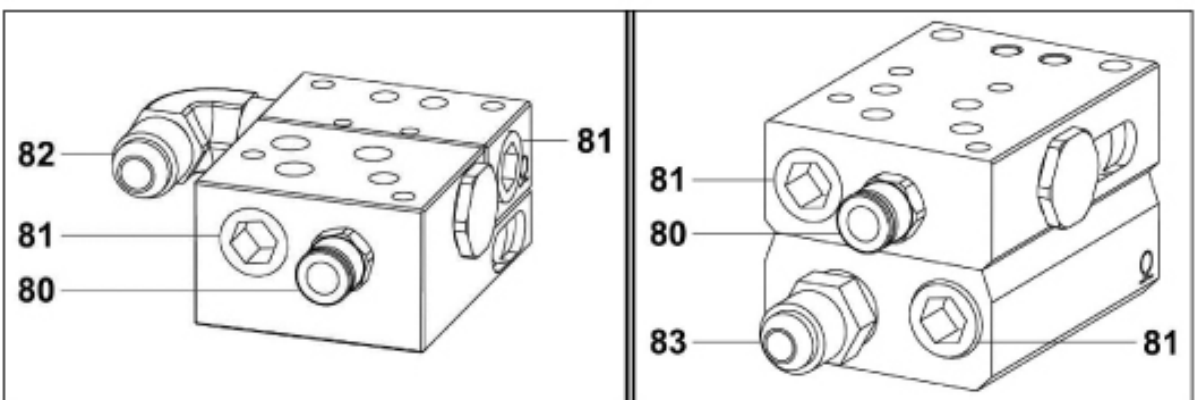
## FOR BASE: 129.690.080 & 129.691.080

No.	Part Number	Description	S/P Level
62	050.261.103	Plug	1
64	129.529.907	Seal (pack of 10)	1
65	NC / NS	Base + insert	1
66	88.124	Screw, model CHc M 5x25	2
63	88.126	Screw, model CHc M 5x40	2
70	930.151.596	Screw, model CHc M 5x60	2
*71	150.040.328	Seal (x10)	-

\*Ind. 71: Qty 1 (For base 129.690.080) | Qty 2 (For base 129.691.080)

## C / FITTINGS

No.	Part Number	Description	S/P Level
80	905.124.901	Fitting, quick release (control) M1/8 BSP-T 4x6	1
81	905.210.303	Plug, fluid, stainless steel, 1/4 NPT	1
82	905.210.602	Elbow fitting, stainless steel, double male, 1/4 NPT - 1/2 JIC (#5 JIC)	2
83	905.210.502	Straight fitting, stainless steel, double male, 1/4 NPT - 1/2 JIC (#5 JIC)	2



## OPTIONS

No.	Part Number	Description	S/P Level
*38	129.990.062	Fitting, 1/8 G-T 4x6mm	1

Ind. 38



## TOOLS

No.	Part Number	Description	S/P Level
50	921.080.301	Allen key size 4mm	1
51	906.300.101	Large size brush	1

Ind. 50

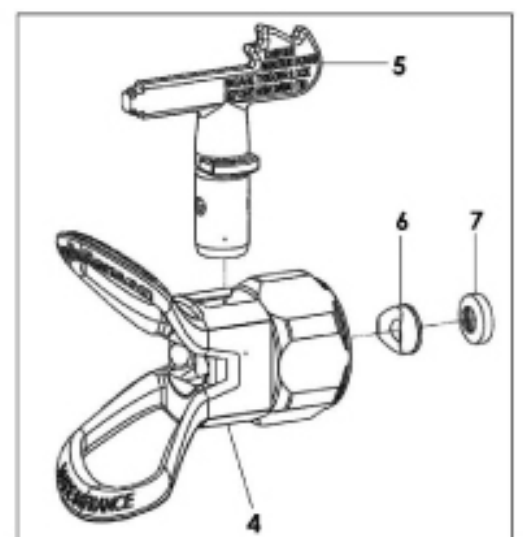


Ind. 51



## ACCESSORIES

No.	Part Number	Description	S/P Level
4	132.740.200	Airless manifold for reversing Tip Top (refer to Doc. 573.148.080)	1
5-7	000.40X.XXX	Reversing Airless Tip Top + seat + seal tip	1
*7	134.740.007	Reversing seal tip (x10)	1
*	129.740.907	Service kit - seat + seal tip (ind. 6 (x4), 7 (x4))	



## SAMES KREMLIN Inc.

North America Headquarters 45001 5 Mile Road, Plymouth, MI 48170 | Toll: (800)573-5554 | Tel: (734)979-0100 | Fax: (734)927-0064

Canada Branch 931 Progress Avenue, Unit 7, Scarborough, ON M1G 3V5 | Toll: (800)450-0655 | Tel: (416)431-5017 | Fax: (416)431-9171

Mexico Branch Acceso III N°16A Int 15A, Parque Industrial Benito Juárez, Querétaro, CP 76120 | Tel: +52 (442)161-2595 ext 170